



We are recruiting for Citizen Science

Contribute to science and help us steward the White Tank Mountains



Buffelgrass (*Pennisetum ciliare*)

Your eyes on the mountain and observations recorded in the cloud will help us create a living map which scientists and land managers can use to monitor changes in biodiversity and make management decisions.

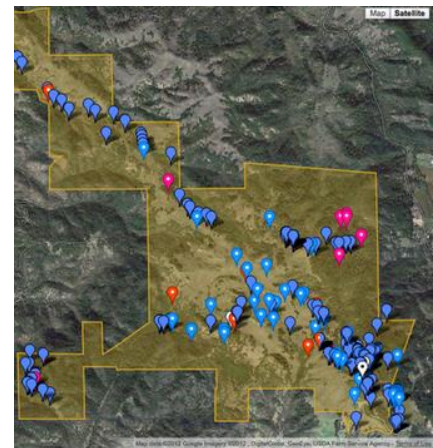
This training is a part of a region-wide effort to gather baseline data and inform invasive species management and native plant restoration.

QUALIFICATIONS:

- Attend training to identify invasive species
- Able to hike short and long distances, sometimes in rugged terrain, on and (if permitted) off trail
- Able to take pictures with smart device and upload to iNaturalist

We are recruiting for citizen scientists to help identify and map invasive species found in and around the White Tank Mountains. From hikers to hunters, birders to bikers, our community is filled with naturalists eager to share what they see on the Mountain.

Participants will be trained by professional researchers on an easy-to-use smart device app called iNaturalist to record observations of at least two high-impact invasive plants: buffelgrass (*Pennisetum ciliare*) and fountain grass (*Pennisetum setaceum*).



TO REGISTER FOR FREE TRAINING, contact:

Jane Fricke

White Tank Mountains Conservancy Volunteer Coordinator
j.fricke@wtmconservancy.org or call (623) 236-8392

Visit these websites for more information:

wtmconservancy.org
mymountainparks.org
inaturalist.org

